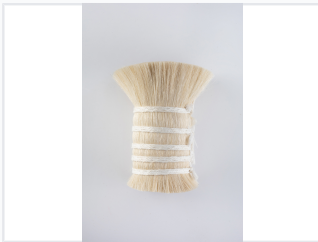


Cylindrical Goat Hair Brush with Cord Binding

This brush features fine goat hair tightly bound with white cord in a cylindrical shape. The natural goat hair provides a soft and flexible texture, making it ideal for delicate applications.



ADDITIONAL IMAGES



Product Overview

Premium Cylindrical Goat Hair Brush

This professional-grade cylindrical brush is crafted from high-quality natural goat hair, known for its exceptional softness and flexibility. The bristles are densely packed and securely bound with durable cord, ensuring structural integrity during use. Available in a versatile range of sizes and a natural color palette of black, white, and grey, this tool is ideal for delicate applications requiring precision and gentle handling.

Material & Construction

Bristle Material	Natural Goat Hair
Available Colors	Black, White, Grey
Binding Method	Cord Binding

Availability

Size Availability	All sizes available
-------------------	---------------------