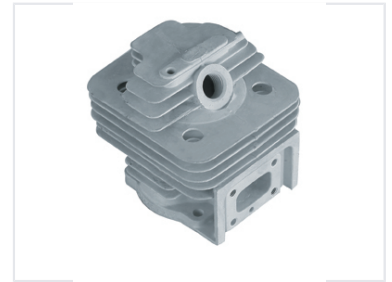


Cylinder with Cooling Fins

This cylinder is a component for internal combustion engines and similar machinery. It is constructed with cooling fins on the exterior to dissipate heat.



Product Overview

High-Performance Brush Cutter Cylinder

This replacement cylinder is engineered for TL52, BG520, and CG520 brush cutter models. Designed with integrated cooling fins, it ensures efficient heat dissipation during operation. The unit is optimized to deliver high power output while maintaining low fuel consumption and reduced emissions for professional-grade performance.

Compatibility

Compatible Models	TL52, BG520, CG520
-------------------	--------------------

Performance Features

Key Benefits

- High power output
- Low fuel consumption
- Low emission design

Design & Construction

Design Notes

Integrated Cooling Fins • Engine Component • High Conductivity Material

Cooling System	Yes
----------------	-----