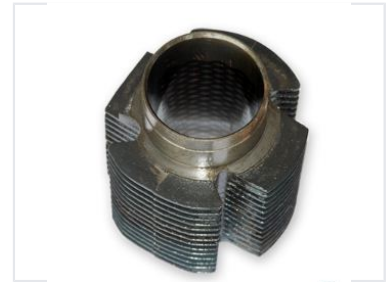


Cylinder Head with Cooling Fins

This precision-engineered cylinder head features an integrated cooling fin design for efficient heat dissipation. Constructed from durable metal alloy, this component is designed for use in internal combustion engines, offering optimal performance and reliability.



Product Overview

Precision-Engineered Cylinder Head

This cylinder head is a precision-engineered component designed for high-performance internal combustion engines. Featuring an integrated cooling fin design, it maximizes surface area to ensure efficient heat dissipation during operation. Constructed from a durable metal alloy, this part is built for reliability and stable thermal management, making it suitable for a wide range of industrial and automotive applications.

Technical Specifications

Key Features

- Central bore design
- Optimized surface area for heat dissipation
- Stable operating temperature maintenance
- Extended engine life support

Material	Durable metal alloy
Cooling Mechanism	Integrated external cooling fins
Application Compatibility	Internal Combustion Engines, Industrial Applications, Automotive Applications