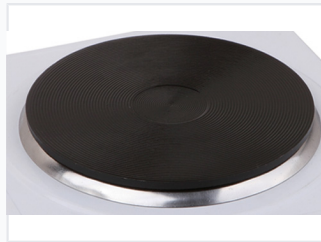


Countertop Hot Plate Cooker

This countertop hot plate features a circular heating element for even heat distribution. Designed for portable use, it provides an efficient cooking solution with adjustable temperature settings.



ADDITIONAL IMAGES



Product Overview

Efficient Countertop Cooking Solution

This double countertop hot plate is designed for professional and commercial utility, offering a compact and portable cooking solution. Featuring two independently controlled heating elements, it provides flexible temperature management for various cooking tasks. Its energy-efficient design ensures reliable performance while maintaining a space-saving footprint.

Technical Specifications

Total Power Output

2000 W
Total Power

1000 W
Per Plate

Input Voltage/Frequency

220-240V / 50Hz

Heating Plate Diameter

155mm + 155mm

Features

Design Highlights

- Double cooking plate configuration
- High efficiency energy saving
- Stainless steel rim
- Ridged surface for even heat distribution

Control System

Multi-step adjustment, Rotary knobs, Indicator lights