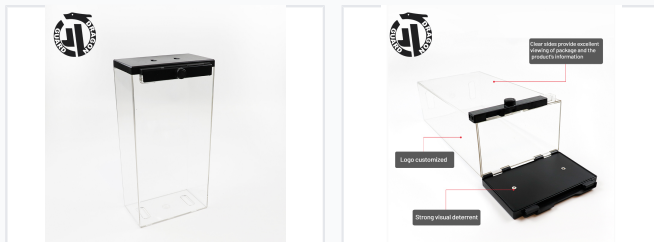


Cosmetic EAS Security Display Case

This transparent EAS plastic display case is designed to protect cosmetic products from theft. It features a clear design for product visibility and a security mechanism to prevent theft.



ADDITIONAL IMAGES



Product Overview

How to use?



Easy-to-use mechanism for retail staff to secure and release products.

High-Security Retail Display Solution

This transparent EAS plastic display safer box is designed to protect high-value cosmetic products from theft while maintaining full visibility for customers. The clear PC+ABS construction allows shoppers to view original packaging and product information without compromising security. It serves as a strong visual deterrent and is compatible with standard retail security antenna systems.

Technical Specifications

Operating Frequency	8.2MHz (RF), 58KHz (AM)
Standard Dimensions	225 x 115 x 65 mm
Material	PC + ABS Plastic
Lock Type	Magnetic Locking

Key Features



Designed to maintain product visibility while supporting various hook types for retail shelving.

Key Benefits

- Keeps original product packaging intact
- Clear sides for excellent product viewing
- Strong visual deterrent against shoplifting
- Supports integrated display hooks
- Triggers retail antennas upon unauthorized removal

Customization Options



We offer full customization for size, frequency, and branding to meet specific retail requirements.

Available Customizations

Custom Sizes • Logo Printing • Color Options • Hook Types • Magnetic Strength

Supply & Logistics

Weekly Supply Ability

100000 pcs

Pieces per Week

Standard Packaging

Metric	Value
Quantity per Carton	1000 pcs
Carton Weight	8.5 kg
Carton Dimensions	40 x 29 x 16 cm

Security Performance

Alarm Technology

When someone brings this safer together with the article without removing, the antennas will alarm.



Cosmetic Safer
2.2m - 2.4m

The safer box triggers retail antennas if an attempt is made to remove the protected item from the store.

Detection Range

2.2m - 2.4m (Antenna dependent)