

Corrugated and Standing Seam Metal Roofing Machine

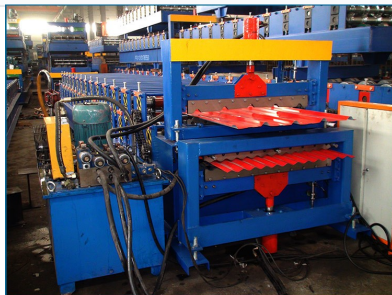
This double-layer forming machine creates corrugated sheets and standing seam metal roofing. It is engineered for efficient production of roofing and cladding materials.



ADDITIONAL IMAGES



Product Overview



Industrial-grade construction designed for high-volume production of roofing materials.

Versatile Double-Layer Roll Forming Solution

This high-efficiency machine is designed to produce both corrugated sheets and standing seam metal roofing profiles using a space-saving double-layer design. It integrates the entire manufacturing process from uncoiling and roll forming to hydraulic cutting and automated stacking. Built with a robust steel frame and precision-engineered rollers, it offers a reliable solution for high-volume production of durable roofing and cladding materials.

Technical Performance

Performance Metrics

8 m/min

Min Production Speed

12 m/min

Max Production Speed

5 T

Uncoiler Capacity

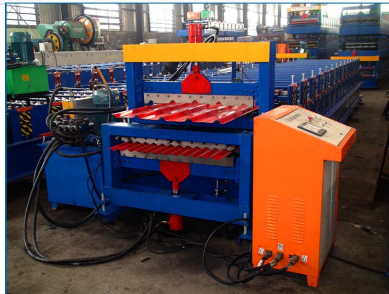
Material Specifications



The double-layer process allows for efficient production of both corrugated and standing seam profiles.

Compatible Materials	Color Steel Plate, Galvanized Sheet, Aluminum Coils, Pre-painted Steel
Feeding Material Width	914-1250mm
Material Thickness Range	0.3-0.8mm

Forming & Cutting System



The machine features a robust hydraulic system for precise forming and cutting of various metal types.

Roller System Details

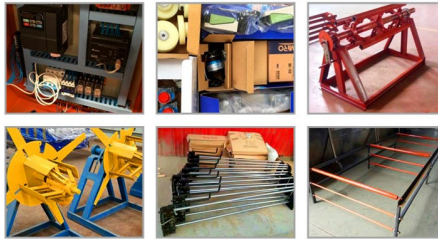
- Material: High grade No.45 forged steel
- Roller Stations: 11-18 rows (customizable)
- Shaft Diameter: 70-80mm

Hydraulic Cutting System

- Blade Material: Cr12Mov with quenched treatment
- Drive: Hydraulic drive controlled by PLC
- Function: Precision dimension cutting for two different profiles

Control & Automation

Spare part pictures:



Precision-engineered rollers and electrical control components ensure consistent output quality.

PLC Control Cabinet

- Operation Modes: Automatic and Manual
- Programmable Settings: Profile length and quantity
- Supported Languages: English, Chinese, Spanish, Russian

Hydraulic System



Heavy-duty steel frame construction designed for long service life in industrial environments.

Hydraulic Unit Parameters

Parameter	Value
Motor Power	4kW
Working Pressure	12-16Mpa (Adjustable)
Oil Type	46# Hydraulic Oil
Solenoid Valve	1 Group

Manufacturing Process

Production Workflow Stages

- Raw Material Preparation
- Component Machining
- Base Plate Production
- Shot Blasting Surface Treatment
- Corrosion-Resistant Painting
- Machine Assembly
- Debugging and Testing
- Packing and Shipment

Certifications & Support

Compliance & Quality

CE Certified • ISO 9001:2008 • ISO 9001:2000

Warranty Period

1 Year