

Cordless Battery-Powered Chainsaw for Wood Cutting

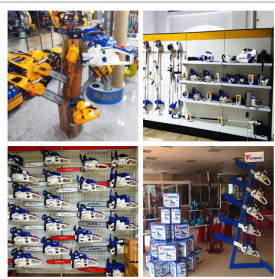
This cordless chainsaw is designed for efficient wood cutting in gardens and outdoor spaces. It features a high-performance motor and a durable cutting chain for smooth, precise cuts.



ADDITIONAL IMAGES



Product Overview



Versatile tool suitable for both professional and home garden maintenance.

High-Efficiency Battery-Powered Chainsaw

This cordless chainsaw is designed for versatile wood cutting and garden maintenance tasks. It features a high-efficiency brushless motor that provides long operational life and substantial power. Designed for user comfort, the lightweight 3.2kg construction enables single-handed operation while minimizing fatigue. The inclusion of an automatic oil-pumping system and an electronic control brake ensures both reliable performance and enhanced operator safety.

Performance Specs

No Load Chain Speed	8000 rpm
Linear Velocity	15.2 m/s
Cutting Capability (4" line)	220 pcs

Technical Details



Lightweight, single-hand design weighing only 3.2kg.



Precision cutting with Oregon Double Guard chain technology.

Total Weight	3.2 kg
Oil Tank Capacity	200 ml
Recommended Bar Length	25-30cm / 10-12 inches
Chain Pitch and Gauge	3/8 inch pitch, .050 inch gauge

Features

Key Features	Brushless Motor, Electronic Brake, Constant Speed Control, Automatic Oiling, Cordless Operation
---------------------	---