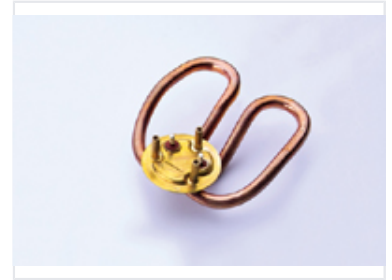


# Copper Serpentine Immersion Heating Element

This immersion heating element is made of high-quality copper, featuring a serpentine coil design for efficient heat transfer. It has a brass flange that ensures a secure, leak-proof seal when installed.



## Overview

### High-Efficiency Immersion Heating

This serpentine immersion heating element is engineered for optimal thermal transfer in liquid heating applications. Featuring a durable copper coil design paired with a robust brass flange, it ensures reliable performance and corrosion resistance. The unit includes integrated threaded ports for secure mounting and electrical connections, making it an ideal component for boilers, water heaters, and various industrial fluid heating systems.

## Technical Specifications

### Design Features

- Serpentine coil geometry
- Flanged mounting system
- Threaded electrical ports
- Corrosion-resistant construction

### Construction Materials

Copper, Brass

## Applications

### Typical Applications

Boilers • Water Heaters • Industrial Processing