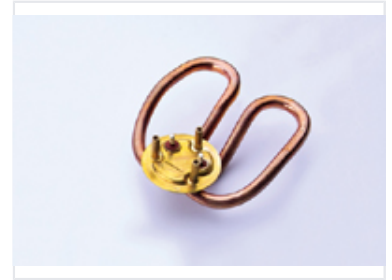


# Copper Immersion Heating Element with Flange

This immersion heating element is constructed from high-quality copper. It is designed for direct immersion in liquids, providing efficient heat transfer in water heaters, boilers, and industrial heating systems.



## Product Overview

### High-Efficiency Heating Solution

This copper immersed heating element features a precision-engineered serpentine coil design, optimized for direct liquid immersion. Mounted on a durable circular brass flange, it ensures efficient heat transfer for demanding applications such as water heaters, boilers, and various industrial heating systems. Built with high-quality copper, this component offers excellent corrosion resistance and consistent thermal performance.

## Technical Specifications

Construction Material	Copper (Heating Element), Brass (Flange)
Design Features	Serpentine Coil, Flange Mount, Corrosion Resistant

## Applications

### Primary Applications

- Water Heaters
- Industrial Boilers
- Liquid Heating Systems