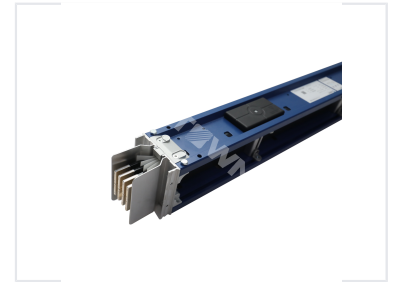
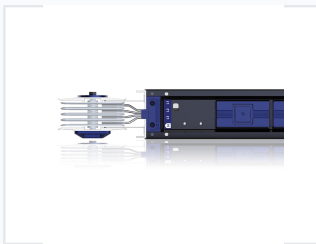


Copper Contact Busway

The copper contact busway is a high-performance electrical distribution system designed for efficient and reliable power transmission. Its modular design allows for easy installation and flexible expansion to accommodate changing power needs.



ADDITIONAL IMAGES



Product Overview

Pro-B Low Voltage Busway System

The Pro-B series is a high-performance bimetal busway system designed for low-voltage power transmission and distribution. Featuring a compact, sandwich-type architecture, it is engineered for maximum reliability, energy efficiency, and operational safety. This versatile solution is suitable for data centers, industrial plants, and commercial infrastructure, providing a scalable and space-saving alternative to traditional cabling.

Technical Specifications

Rated Current Capacity

250 A Minimum Current	5000 A Maximum Current
---------------------------------	----------------------------------

Frequency

- 50
- 60

IP Rating

IP66

Compliance and Standards

IEC Standards

IEC61439

Applications

Industry Applications

- Data Centers
- Energy and Infrastructure
- Industrial Facilities
- Commercial Buildings
- Civil Buildings