

# Control Arm Bushing for TOYOTA SPACIA

This control arm bushing provides a durable connection between the control arm and the vehicle's frame, ensuring proper suspension movement. It is manufactured from high-quality steel and natural rubber for resistance to wear and corrosion.



## Product Overview



### Premium Suspension Control Arm Bushing

This high-quality control arm bushing is specifically engineered for TOYOTA SPACIA vehicles to provide a durable connection between the control arm and the vehicle frame. It effectively reduces noise, vibration, and harshness (NVH) while restoring optimal suspension alignment and handling characteristics. Manufactured from refined steel and natural rubber, it ensures a long service life and improved driving comfort through advanced multi-point glue injection technology.

## Technical Specifications

### Manufacturing Process

- One-piece casting
- Multi-point glue injection (0.001um fineness)
- Uniform metal thickness processing
- Precision hole locating

### Material Composition

Refined Steel, Natural Rubber, Anti-corrosion Coating

## Performance Metrics



### Performance Benefits

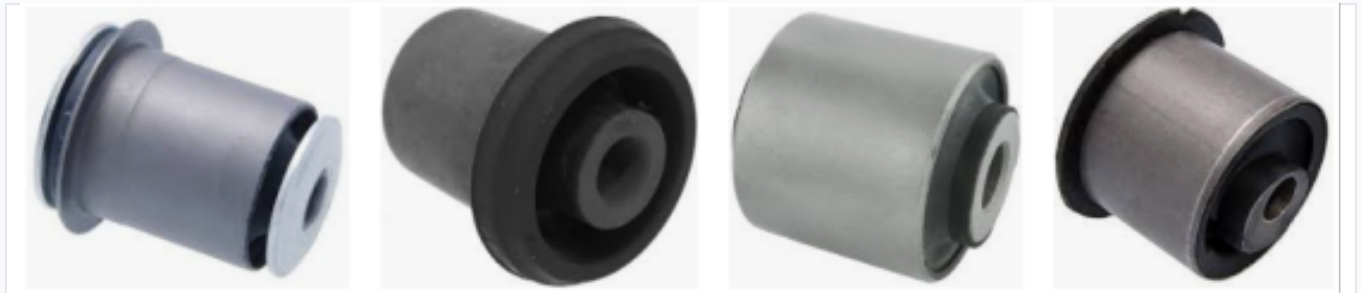
**12 Months**  
Warranty

**100 %**  
In-situ Fit

### Core Functions

- Resolves vehicle jitters
- Improves driving stability
- Enhances cabin comfort
- Reduces metal-on-metal contact

## Installation & Compatibility



### Fitment Type

Direct Replacement • In-situ Installation

### Compatible Vehicle

TOYOTA SPACIA

## Commercial Terms

### Order Details

| Parameter              | Value                              |
|------------------------|------------------------------------|
| Minimum Order Quantity | 500 pcs                            |
| Lead Time              | 45-60 days                         |
| Packaging              | Neutral (Plastic Bag + Carton Box) |
| Trade Terms            | EXW, FOB, CIF                      |

## Quality Standards

### Quality Certifications

ISO, IATF 16949:2016