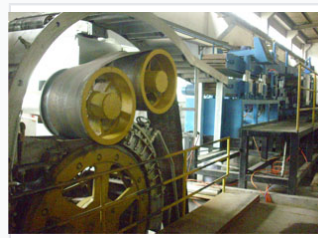


Continuous Casting and Rolling Line for Metal Rods and Plates

This continuous casting and rolling line integrates casting and rolling processes. It efficiently produces copper, aluminum, and lead alloy rods and plates.



ADDITIONAL IMAGES



Overview

Advanced Continuous Casting and Rolling Solution

This continuous casting and rolling line is a high-efficiency automation system designed for the production of copper rods, aluminum rods, and lead alloy plates. Utilizing advanced digital adjustment and PLC touch screen control, the system integrates liquid-state casting with multi-stage rolling processes to ensure consistent material quality. It is particularly optimized for high-volume manufacturing, including the production of lead-acid battery shells.

Technical Specifications

Rolling Process Stages

- 7 Continuous rolling procedures
- 3 Continuous preciseness rolling procedures

Lead Alloy Plate Width

450 mm

Plate Thickness Range

0.7 - 2.0 mm

Control & Automation

Operational Features

- Fully integrated main and auxiliary equipment
- Continuous liquid-to-solid casting process
- Automated movement and process control

Control System

PLC Touch Screen, Digital Adjustment, Programmed Control, Automated Production

Applications

Compatible Materials

Copper • Aluminum • Lead Alloy

Primary Output Uses

- Copper rod/wire production
- Aluminum rod/wire production
- Lead-acid battery shell manufacturing