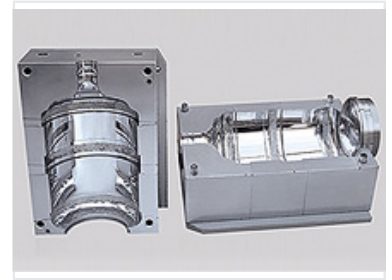


Container Injection Mold

This precision-engineered mold is designed for manufacturing large plastic containers. Constructed from high-grade steel, it ensures accurate replication of the container's shape and structural integrity.



Product Overview

Precision Container Injection Mold

This precision-engineered mold is specifically designed for the high-volume manufacturing of large plastic containers, such as water bottles and carboys. Constructed from high-grade steel, it ensures exceptional durability, wear resistance, and long-term performance in demanding production environments. The design incorporates advanced cooling and ejection systems to maintain tight tolerances and achieve complex geometries with consistent structural integrity.

Technical Specifications

Design Features

- Efficient cooling system
- Optimized ejection mechanism
- High-precision surface finish
- Wear-resistant construction

Material	High-grade steel
Application Compatibility	Water Bottles, Carboys, Large Plastic Containers

Performance Metrics

Performance Highlights

1 Two-piece

Mold Type

Manufacturing Capability

High-Volume Production • Tight Tolerances • Complex Geometries