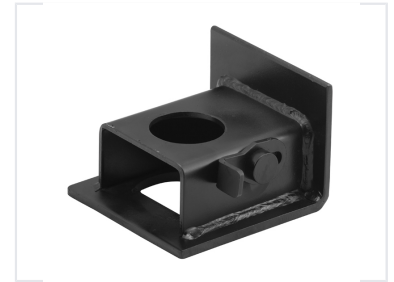


Container Corner Casting Lock

This heavy-duty container lock is designed for secure attachment and stability. Constructed from robust steel, the lock fits standard container corner castings for a reliable, tamper-resistant connection.



ADDITIONAL IMAGES



Product Overview

Heavy-Duty Container Corner Casting Lock

This heavy-duty container lock is engineered for secure attachment and superior stability in demanding transport and storage environments. Constructed from robust steel with a durable black finish, it features a reliable locking mechanism designed to fit standard container corner castings. It provides a tamper-resistant connection, making it an ideal solution for securing containers on trailers, railcars, or in stationary storage setups.

Technical Specifications

Compatibility

- Standard container corner castings
- Trailer applications
- Railcar applications
- Stationary storage

Key Design Features

Four-point star knob • Square tube receiver • Vertical mounting plate • Tamper-resistant

Material & Finish

Robust Steel, Black Finish, Corrosion Resistant