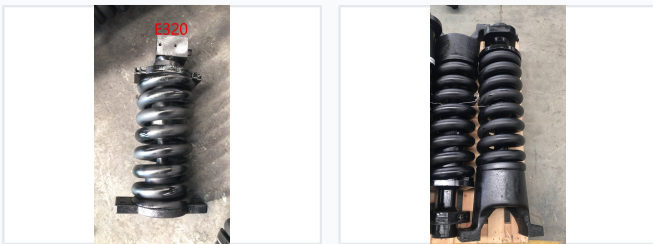


# Construction Machinery Track Adjuster Assembly

This track adjuster assembly is designed for construction machinery. It maintains proper track tension, ensuring optimal performance and preventing premature wear.



## ADDITIONAL IMAGES



## Product Overview

### Professional Track Adjuster Assembly

This heavy-duty track adjuster assembly is engineered for construction machinery, providing essential track tensioning and shock absorption. The robust construction includes a high-strength spring mechanism, cylinder, and mounting hardware, designed to ensure optimal performance and longevity in demanding operating environments. It is a critical component for maintaining proper track tension to prevent premature wear and mechanical failure.

## Specifications

### Key Components

- Recoil Springs
- Hydraulic Cylinder
- Piston
- Mounting Brackets
- Threaded Rod

### Construction Details

Heavy-duty • High-strength material • Robust design

### Manufacturing Expertise

Established production since 2003

### Equipment Compatibility

Construction Machinery, E320