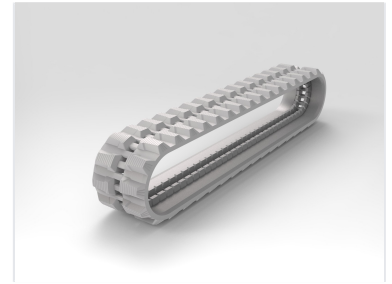
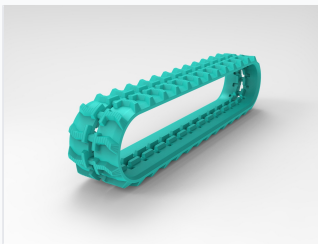


Construction Machinery Rubber Track

This rubber track is designed for construction machinery, offering wide ground adaptability and reduced vibration. Its durable construction provides enhanced traction and stability on diverse terrains.



ADDITIONAL IMAGES



Product Overview

High-Performance Construction Machinery Rubber Tracks

These continuous rubber tracks are engineered for superior performance in demanding construction environments. Featuring a reinforced carcass and high-quality rubber compounds, they offer exceptional resistance to wear, cuts, and punctures. Their aggressive tread pattern ensures excellent traction and stability, making them an ideal choice for mini excavators, loaders, and various tracked machinery.

Key Advantages

Performance Advantages

1 Wide

Ground Adaptability

1 Low

Vibration Level

1 Low

Noise Level

1 Small

Ground Pressure

Technical Features

Construction Details

- Continuous construction for high integrity
- Reinforced internal carcass for load-bearing
- Internal drive lugs for reliable power transmission
- Wear and puncture-resistant rubber compound
- Aggressive tread pattern for diverse terrain

Applications

Suitable Machinery

Mini Excavators, Skid Steer Loaders, Tracked Vehicles