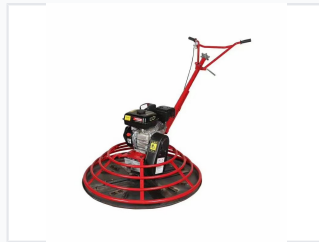


Concrete Power Trowel Machine

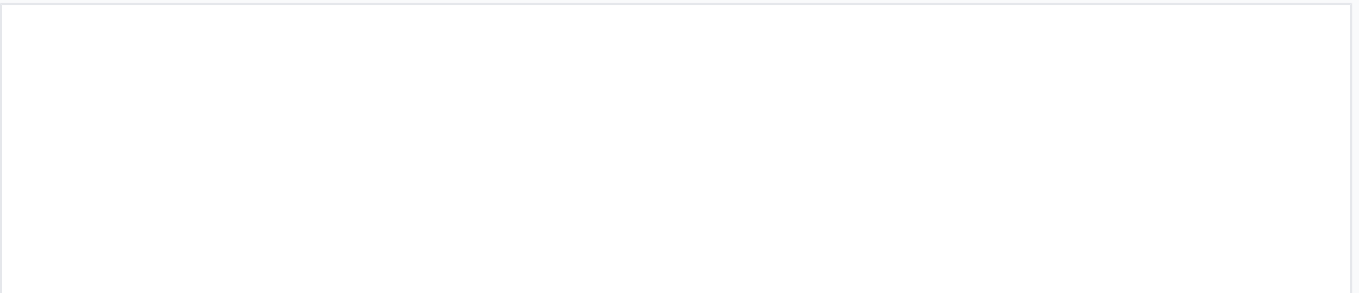
This concrete power trowel machine is designed for smoothing and finishing concrete surfaces. It features a rotating multi-blade system enclosed by a protective guard for safety and even finishing.



ADDITIONAL IMAGES



Product Overview



A ride-on model featuring high-capacity finishing blades and ergonomic operator controls for large-scale projects.

High-Efficiency Concrete Finishing

This Concrete Power Trowel is designed for professional-grade smoothing and finishing of large-scale concrete surfaces. Engineered for high operating efficiency, it is available in both walk-behind and ride-on configurations to suit various construction site requirements. With a robust gasoline-powered engine and adjustable blade pitch, it ensures a dense, level, and professional finish for floors, patios, and industrial pavements.

Performance Metrics

Equipped with headlights and a robust frame, this ride-on unit is designed for 24/7 construction site efficiency.

Key Performance Metrics

1910 mm

Working Diameter

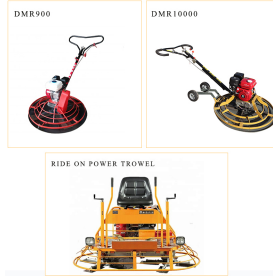
970 mm

Disk Diameter

340 kg

Machine Weight

Technical Specifications



Our range includes the DMR900 walk-behind, DMR10000 wheeled walk-behind, and heavy-duty ride-on models.

Engine Type

- Briggs & Stratton
- Domestic Engine

Power Source

Gasoline

Power Rating

2200/3000

Physical Dimensions

2000*1050*1300mm

Available Colors

Red, Yellow, Black

Core Components

Included Core Components

- PLC
- Engine
- Bearing
- Gearbox
- Motor
- Pressure vessel
- Gear
- Pump

Service & Support

After-Sales Services

Free spare parts • Video technical support • Online support

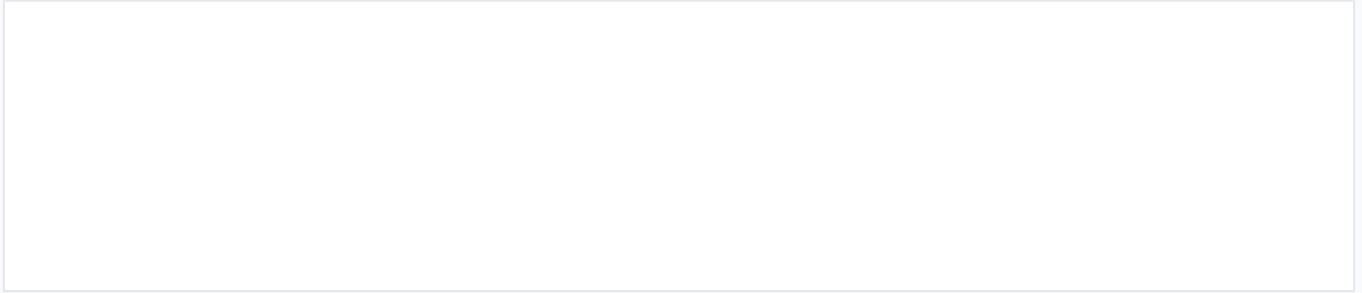
Quality Assurance

- Video outgoing-inspection provided
- Machinery test report provided

Warranty Period

1 Year

Logistics



Machines are securely packed in protective film and reinforced crates to ensure safe international delivery.

Delivery Schedule

Quantity (Sets)	Est. Time (Days)
1 - 100	15
> 100	To be negotiated

Departure Ports

Qingdao, Shanghai