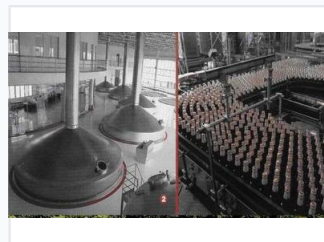
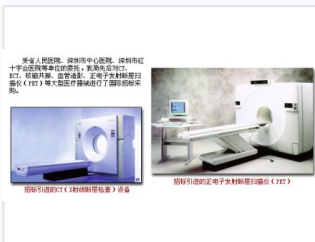


Concrete Mixing Plant

Concrete mixing plants efficiently combine cement, aggregates, and water to produce concrete. These plants are essential for large construction projects requiring consistent and high-quality concrete.



ADDITIONAL IMAGES



Overview

Professional Concrete Mixing Solution

This high-performance concrete mixing plant is designed for efficient, large-scale construction projects. Engineered for reliability and precision, it facilitates the seamless production of high-quality concrete mixtures essential for infrastructure development. This robust station integrates advanced material handling and mixing technologies to ensure optimal performance on demanding job sites.

Equipment Capabilities

Primary Applications

- Road Construction
- Water Conservancy Projects
- Mining Operations
- Infrastructure Development

Included Machinery

Concrete Mixing Station, Asphalt Mixing Station, Hydraulic Excavator, Loader, Drilling Machine, Paving Machine, Road Roller, Self-loading Vehicle, Electric Concrete Conveyor