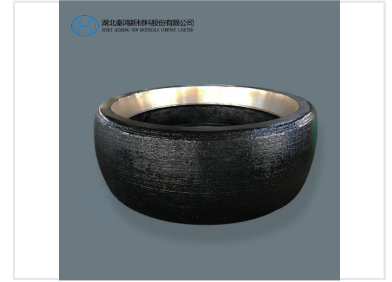
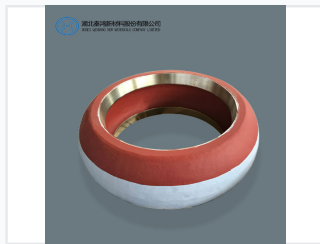
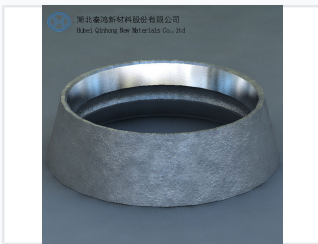


Composite Ceramic Roller for Cement Plants

This composite ceramic roller is designed for cement plants requiring high hardness and wear resistance. The ceramic layer achieves a hardness exceeding HV2100, ensuring exceptional durability.



ADDITIONAL IMAGES



Product Overview

High-Performance Composite Ceramic Roller

Designed specifically for cement plants, this composite ceramic roller offers exceptional hardness and wear resistance to withstand harsh operating conditions. By utilizing advanced internal materials like high chromium cast iron, the roller achieves a service life twice as long as traditional alternatives. This design significantly reduces maintenance frequency and costs, while providing the flexibility for surfacing repairs to extend operational longevity.

Performance Metrics

Lifespan Improvement

10 %

Increased Lifespan vs Domestic Products

Grinding Depth Limit

45 mm

Technical Features

Key Advantages

- High hardness and wear resistance
- Reduced ventilation resistance and vibration
- Uniform surface wear
- Repairable via surfacing
- Dual-sided usability

Construction Materials

High Chromium Cast Iron, Composite Ceramic

Market Reach

Export Markets

Russia • Germany • Pakistan • Costa Rica • Argentina • Greece