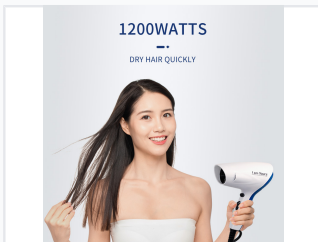


Compact Travel Hair Dryer with Cool Shot

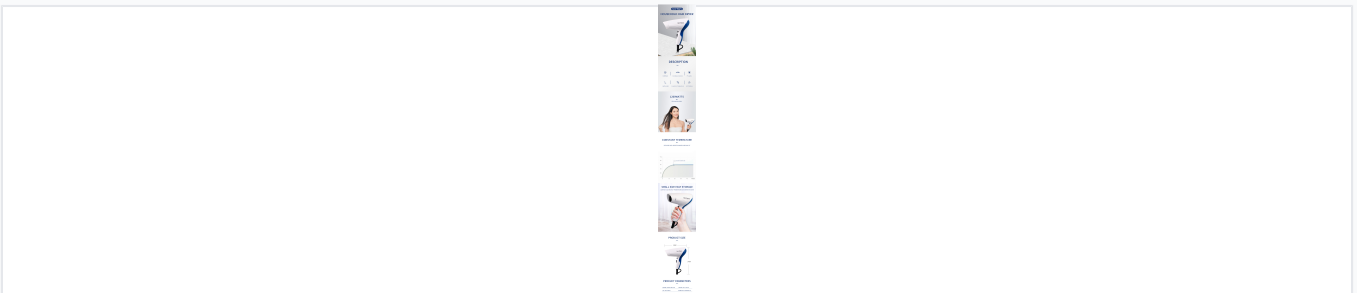
This compact hair dryer is designed for travel, featuring a DC motor that delivers 1200W of power. It offers one speed setting and two temperature settings, along with a cool shot function.



ADDITIONAL IMAGES



Product Overview



A detailed look at the compact styling and operational parameters of the hair dryer.

Compact Performance for Travel

This hair dryer is designed for maximum efficiency in a travel-friendly form factor. Featuring a robust 1200W motor, it delivers powerful airflow while incorporating overheat protection to ensure user safety. With adjustable temperature and speed settings, it offers versatile styling options for various hair types in a lightweight and space-saving design.

Technical Specifications

Performance Metrics

1200 W

Power Rating

240 V

Max Voltage

Electrical Requirements

Parameter	Value
Voltage Range	220V-240V
Frequency	50/60Hz
Power Consumption	1200W

Features

Operational Modes

- 1 Speed Setting
- 2 Temperature Settings
- Cool Shot Function

Safety & Design

Overheat Protection, Compact Design, Lightweight, Anti-flaming Material