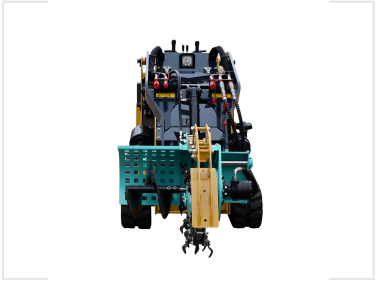


Compact Track Loader with Trencher Attachment

This compact track loader is designed for digging narrow trenches in various soil conditions. The track system ensures stability and maneuverability on uneven terrain.



ADDITIONAL IMAGES



Overview

Compact Multi-Purpose Loader

This compact track loader is designed for high-efficiency operation in narrow and confined spaces, such as urban infrastructure, warehouses, and landscaping sites. Featuring a powerful hydraulic system and an intuitive quick-change device, the machine supports over 300 practical attachments, including trenchers, buckets, and augers. Its tracked design ensures superior stability and traction, while the integrated electronic control system promotes safety and ease of use for operators.

Performance

Key Performance Metrics

381 kg

Rated Operating Capacity

1088.6 kg

Tipping Load

Engine & Electrical

Engine Specifications

Specification	Value
Horsepower (SAE Gross)	35.7 kW
Maximum Governed RPM	2600 RPM
Torque @ 2200 RPM	143 Nm
Number of Cylinders	4
Displacement	2.216 L

Electrical System

- Alternator: 85 amps
- Battery: 12 V, 62 Ah
- Starter: 12 V, 2 kW Gear Reduction Type

Capacities

Fluid Capacities

System	Capacity
Cooling System	14 L
Fuel Tank	65 L
Engine Oil with Filter	10 L
Hydraulic Reservoir	75 L
Hydraulic System	62 L

Features

Key Features

Tracked Undercarriage, Quick-Change Attachment System, Electronic Control System, Hydraulic Drive Safety System, Compact Design