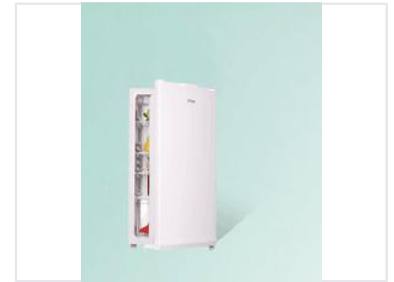


Compact Refrigerator with Adjustable Shelves

This compact refrigerator is designed for efficient cooling and storage. It features adjustable shelves, a door rack, and a temperature control dial.



Product Overview

Compact Cooling Solution

This compact refrigerator is an ideal solution for small apartments, dorm rooms, or professional office spaces. Designed for efficient cooling, it features adjustable shelving and specialized storage to maximize interior organization. The unit operates with a focus on energy efficiency and quiet performance to ensure comfort in any environment.

Performance

Operation

Energy Efficient, Quiet Operation

Storage Features

Shelving and Storage

- Adjustable main shelves
- Dedicated door rack for bottles
- Dedicated door rack for cans

Controls

Control Type

Manual temperature control dial

Applications

Recommended Use

Apartments • Dorm Rooms • Offices