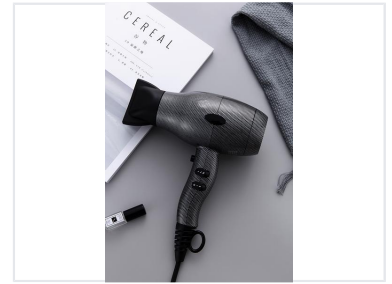


# Compact Professional Hair Dryer

This compact hair dryer is designed for efficient and reliable hair drying. It features multiple speed and heat settings, allowing for customized styling.



## ADDITIONAL IMAGES



## Overview

### Professional Performance in a Compact Design

This professional-grade hair dryer is engineered for both salon and home use, delivering powerful airflow with a 2100W motor. It features advanced ionic, ceramic, and keratin-infused technology to minimize heat damage while reducing frizz and enhancing shine. With customizable heat and speed settings, a cool shot button, and a low-noise operation, it provides a versatile and comfortable styling experience.

## Technical Specifications

### Power Output

**2100 W**

Maximum Power

**Motor Type** Professional A.C or DC

**Noise Level** Low noise

## Styling Features

### Special Functions

Freeze shot button

**Heat Settings** 3

**Speed Settings** 2

**Technology** Tourmaline Ionic, Ceramic Radiation, Keratin Infused

## Design & Accessories

### Included Accessories

- Professional concentrator
- Diffuser

### Maintenance

Removable magnetic filter