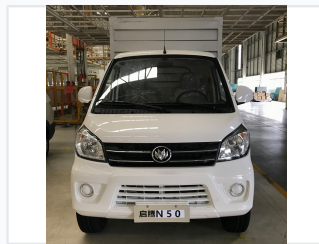


Compact Minitruck for Urban Transport

This minitruck is engineered for efficient performance in urban environments, offering a balance of power and economy. Its compact size and practical loading space make it suitable for navigating narrow streets and delivering goods in congested areas.



ADDITIONAL IMAGES



Overview

Compact Urban Transport Solution

This compact minitruck is engineered specifically for efficient urban and suburban transport. Featuring a robust 1.5L gasoline engine paired with a 5-speed manual transmission, it delivers reliable power for both low-speed maneuvering and hill climbing. Its practical design and maneuverable dimensions make it an ideal choice for businesses requiring cost-effective, light-duty cargo transport in congested environments.

Performance

Engine Type	1.5L Gasoline
Transmission	5-speed fully synchronous manual
Total Gross Mass	2600 kg

Dimensions

Dimensions (L/W/H)

4722 mm

Length

1677 mm

Width

2436 mm

Height

Wheelbase

3050 mm

Features

Key Design Features

- Compact turning radius for narrow streets
- Simple mechanical structure for easy maintenance
- Robust chassis construction
- Practical cargo bed design

Best For

Urban Delivery, Suburban Transport, Light-Duty Cargo, Small Business