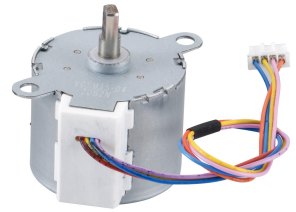


Compact Gear Motor

This compact gear motor features a cylindrical body with mounting flanges. It is equipped with a multi-colored wire harness terminating in a white connector for electrical integration.



ADDITIONAL IMAGES

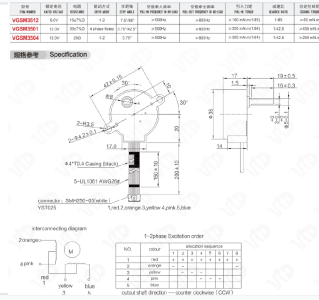


Overview

Compact Gear Motor VGSM35 Series

The VGSM35 series is a precision-engineered gear motor designed for reliable performance in motion control applications. Featuring a robust metal housing and integrated gearbox, these motors are ideal for robotics, automation, and industrial systems requiring precise rotational movement. With versatile voltage options and standardized wiring connectors, they offer seamless integration into diverse electronic systems.

Technical Specifications



Technical diagram showing wiring, connector pinout, and dimensional specifications for the VGSM35 series.

Key Performance Metrics

180 mN.m

Min Pull-in Torque (VGSM3512)

350 mN.m

Min Pull-in Torque (VGSM3501/04)

800 Hz

Pull-out Frequency

Model Comparison

Model	Rated Voltage	Resistance	Gearbox Ratio
VGSM3512	5.0V	15±7%Ⓞ	1:85
VGSM3501	12.0V	30±7%Ⓞ	1:42.5
VGSM3504	12.0V	20Ⓞ	1:42.5

Design & Construction

Wiring & Connectivity

- UL1061 AWG26# Wiring
- SMH250-05 Connector (White)
- 1-2 Phase Excitation Order
- Multi-colored wire harness

Construction Features

Metal Housing, Cylindrical Body, Mounting Flanges, Precision Gearbox