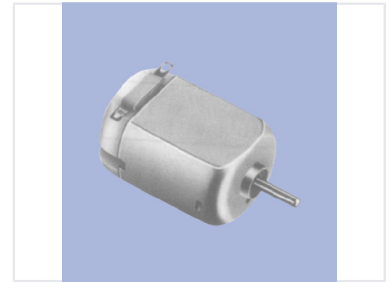


Compact DC Motor for Low-Power Applications

This compact DC motor is designed for various low-power applications. It features a cylindrical housing with mounting tabs for easy integration.



Overview

Compact DC Motor for Low-Power Applications

This compact DC motor is engineered for efficiency in low-power applications. Featuring a durable cylindrical housing with integrated mounting tabs, it allows for seamless installation into various systems. It is an ideal solution for robotics, hobby electronics, and small-scale industrial machinery requiring reliable, precise rotational motion.

Technical Specifications

Motor Type	DC Motor
Suitable Applications	Robotics, Hobby Projects, Small-Scale Industrial

Design Features

Housing Design	Cylindrical with mounting tabs
Shaft Configuration	Single shaft