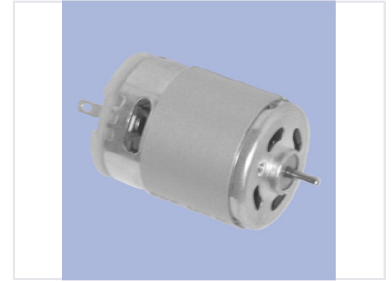


Compact DC Electric Motor

This compact DC electric motor features a cylindrical metal housing with ventilation. It is suitable for low-power applications requiring rotational motion, such as robotics and small appliances.



Product Overview

Compact DC Electric Motor

This compact DC electric motor is designed for efficiency and versatility in various low-power applications. Featuring a durable cylindrical metal housing and an integrated end cap with ventilation holes, it ensures reliable operation during use. The unit includes accessible connection terminals, making it a straightforward choice for robotics, small appliance integration, and hobbyist projects requiring precise rotational motion.

Physical Characteristics

Design Features

Cylindrical Metal Housing, Ventilated End Cap, Protruding Shaft

Applications

Typical Applications

- Robotics
- Hobby Projects
- Small Appliances

Technical Specifications

Motor Type

DC Electric Motor