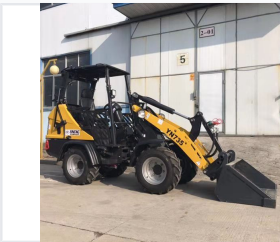


# Compact Construction Mini Loader

This compact mini loader is designed for efficient material handling in confined spaces. Its robust chassis and hydraulic system are optimized for lifting and loading tasks.



## ADDITIONAL IMAGES



## Overview

### Versatile Construction Mini Loader

The YN735 is a high-performance mini loader engineered for material handling in confined environments. It features a robust Perkins engine and advanced Sauer-Danfoss hydraulics to deliver stable, flexible operation. With an articulated steering design and a 43-degree turning angle, it offers exceptional maneuverability for landscaping and urban construction projects.

## Performance Metrics

### Key Performance Metrics

**1320 kg**

Rated Operating Capacity (Bucket)

**2888 mm**

Max Dump Height

**20 km/h**

Max Travel Speed

## Technical Specifications

### Engine Details

- Engine: Perkins
- Rated Power: 26.4 kw
- Rated Speed: 2800 rpm

### Dimensions & Weight

Parameter	Value	Unit
Operating Weight	2510	kg
Length	4139	mm
Width	1080	mm
Height	2230	mm
Wheel Base	1502	mm

### Operational Specs

Articulated Steering, 43 Degree Turning Angle, Hydraulic Arm Damping System, Multi-integrated Joystick