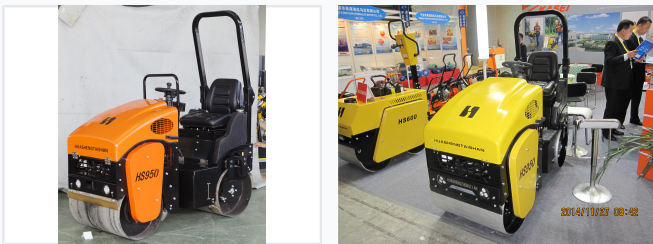


Compact Asphalt Compactor

This compact asphalt compactor is designed for efficient compaction of asphalt, soil, and other materials. Its small size allows easy maneuverability in tight spaces, making it ideal for sidewalks, bike paths, and small road repairs.



ADDITIONAL IMAGES



Product Overview

Compact Performance for Precision Paving

The HS950 Mini Road Roller is a versatile construction machine engineered for efficient asphalt compaction and soil stabilization. Its compact design and high maneuverability make it the ideal solution for confined spaces, including sidewalks, bike paths, and small-scale repair projects. Built for durability and consistent performance, this roller ensures a level, stable surface while offering intuitive operator controls for enhanced productivity.

Key Features

Design Highlights

- Robust frame construction for long-term durability
- Smooth drum operation for uniform compaction
- High maneuverability for tight spaces
- User-friendly operator controls
- Reliable engine for consistent power

Suitable Applications

Asphalt Compaction, Soil Stabilization, Sidewalk Paving, Small-scale Repairs, Confined Space Operation

Technical Specifications

Performance Metrics

950 HS

Series Class

Model Number

HS950