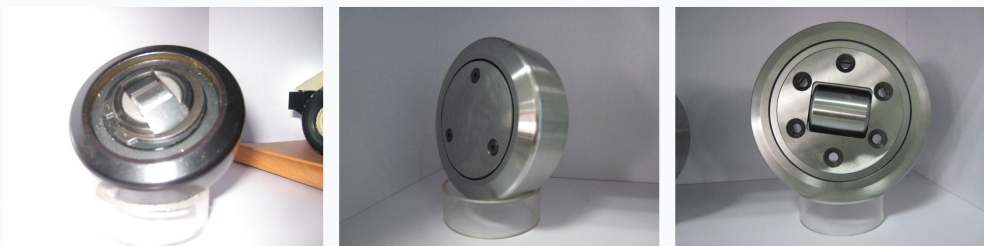


Combined Roller Bearing for Radial and Axial Loads

This combined roller bearing is designed to handle both radial and axial loads. Its robust construction ensures durability and reliable performance in various machinery and equipment.



ADDITIONAL IMAGES



Product Overview

High-Performance Combined Roller Bearings

These combined roller bearings are engineered to simultaneously support both radial and axial loads, making them an essential component for heavy-duty industrial machinery. Constructed from high-quality bearing steel (GCr15), they offer superior durability and wear resistance in demanding environments. The precision-machined raceways and integrated roller elements ensure smooth, efficient operation and extended service life for your equipment.

Technical Specifications

Dimensions and Load Capacity

| REF | D (mm) | T (mm) | d (mm) | H (mm) | h (mm) | B (mm) | A (mm) | S (mm) | r (mm) | C (KN) |
|--------|--------|--------|--------|--------|--------|--------|--------|--------|--------|--------|
| 4.053 | 52.5 | 40 | 30 | 33 | 27 | 17 | 5 | 15 | 2 | 24 |
| 4.054 | 62 | 42 | 30 | 37.5 | 30.5 | 20 | 2.5 | 20 | 3 | 39 |
| 4.055 | 70.1 | 48 | 35 | 44 | 36 | 23 | 2.5 | 22 | 4 | 56 |
| 4.056 | 77.7 | 54 | 40 | 48 | 36.5 | 23 | 3 | 24 | 4 | 59 |
| 4.057S | 77.7 | 54 | 40 | 40.7 | 29 | 23 | 3 | 24 | 4 | 59 |
| 4.057L | 78.1 | 54 | 40 | 40.7 | 29 | 23 | 3 | 24 | 4 | 59 |
| 4.058 | 88.4 | 59 | 45 | 57 | 44 | 30 | 3.5 | 26 | 4 | 85 |
| 4.059S | 101.2 | 67 | 50 | 46 | 33 | 28 | 3 | 30 | 3 | 92 |

Material & Lubrication

Bearing Steel (GCr15), LR3 Lubrication