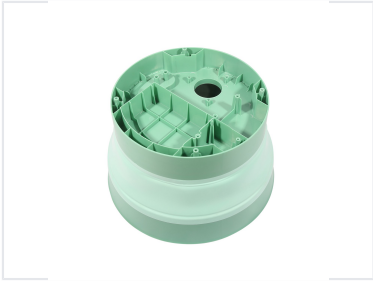
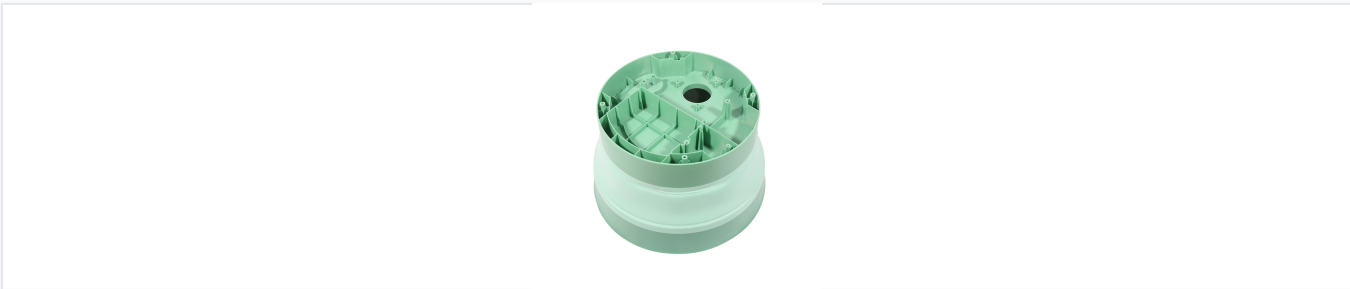


# Collapsible Over Mold

This collapsible over mold features a segmented design for space-saving storage. Constructed from durable material, it is ideal for efficient material processing in various molding applications.



## Product Overview



Detailed view of the collapsible overmold component showing its precision construction and flexible structure.

### Precision Over Mold Solutions

This collapsible over mold is engineered for high-precision manufacturing applications, offering versatility and efficiency. Designed with robust materials, it supports a wide range of production requirements, from automotive to consumer electronics. The mold features a flexible, collapsible design that optimizes storage and handling, while maintaining high structural integrity for consistent, high-quality output.

## Technical Specifications

Mould Base Materials	P20, 45#, 4CR13
Cavity Materials	P20, P20H, 718, 718H, 2738, Nak80, S136, SKD61, 8407, H13, 2343, 2344, 2311, 2312, 2379, 2316, 2093, 2767
Mould Life	0.2-2 million Shots
Tonnage Range	3600 T
Design Software	UG, Pro-E, AutoCAD, CATIA
Compatible Materials	PS, ABS, PP, PVC, PMMA, PBT, PC, POM, PA66, PA6, PBT+GF, PC/ABS, PEEK, HDPE, TPU, PET, PPO

## Performance Metrics

Key Production Metrics

**30 days**  
Minimum T1 Time

**40 days**  
Maximum T1 Time

## Industry Applications

**Industries Served**  
Automotive • Communications • Electronics • Home Appliances • Household Products