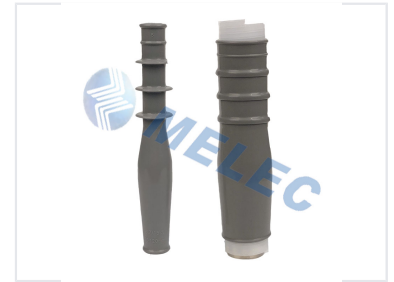


# Cold Shrinkable Cable Termination Kit (Indoor)

This cold shrink termination kit is suitable for indoor applications with polymeric cables up to 8.7/15(17.5)kV. The product is tested in accordance with IEC 60502-4 and can be used for copper or aluminum alloy conductors.



## ADDITIONAL IMAGES



## Overview

### Cold Shrinkable Termination Kit

This cold shrinkable cable termination kit is engineered for reliable indoor electrical connections, supporting voltage ratings up to 8.7/15(17.5)kV. Designed for compatibility with PVC, PE, and XLPE polymeric cables, it accommodates both copper and aluminum alloy conductors. The system utilizes pre-expanded silicone rubber components that shrink tightly onto the cable, ensuring superior insulation, UV resistance, and hydrophobicity without the need for heat or specialized tools.

## Technical Specifications

### Compliance Standards

IEC 60502-4

### Voltage Rating

8.7/15(17.5) kV

### Compatible Cable Types

PVC, PE, XLPE

### Conductor Compatibility

Copper, Aluminium Alloy

## Features

### Key Installation Benefits

- No heat, torches, or special tools required
- Pre-expanded components on easy-to-remove spiral holdout
- Integrated geometric stress control
- Void-filling mastic reduces positioning errors

### Material Performance

- High UV-resistance
- Excellent anti-tracking properties
- Superior hydrophobicity for long service life

## Sizing Data

### 1-core

Voltage U <sub>0</sub> /U(Um)	Application	Cross-section (mm <sup>2</sup> )	Nominal Insulation Thickness (mm)	Diameter over Insulation (mm)	Type	Cable Lug
8.7/15(17.5)kV	Indoor	25-50	4.5	17-21	MLN-15-1-25-50	AUS/AU
		70-120		22-26	MLN-15-1-70-120	
		150-240		26.5-31	MLN-15-1-150-240	
		300-400		32.7-36	MLN-15-1-300-400	
	Outdoor	25-50		17-21	MLW-15-1-25-50	DDT/AU
		70-120		22-26	MLW-15-1-70-120	
		150-240		26.5-31	MLW-15-1-150-240	
		300-400		32.7-36	MLW-15-1-300-400	

Technical specifications for 1-core indoor cable terminations.

### 3-core

Voltage U <sub>0</sub> /U(Um)	Application	Cross-section (mm <sup>2</sup> )	Nominal Insulation Thickness (mm)	Diameter over Insulation (mm)	Type	Cable Lug
8.7/15(17.5)kV	Indoor	25-50	4.5	17-21	MLN-15-3-25-50	AUS/AU
		70-120		22-26	MLN-15-3-70-120	
		150-240		26.5-31	MLN-15-3-150-240	
		300-400		32.7-36	MLN-15-3-300-400	
	Outdoor	25-50		17-21	MLW-15-3-25-50	DDT/AU
		70-120		22-26	MLW-15-3-70-120	
		150-240		26.5-31	MLW-15-3-150-240	
		300-400		32.7-36	MLW-15-3-300-400	

Technical specifications for 3-core indoor cable terminations.

### Termination Dimensions & Sizing

Cross-Section (mm <sup>2</sup> )	Diameter over Insulation (mm)	Insulation Thickness (mm)
25-50	17-21	4.5
70-120	22-26	4.5
150-240	26.5-31	4.5
300-400	32.7-36	4.5