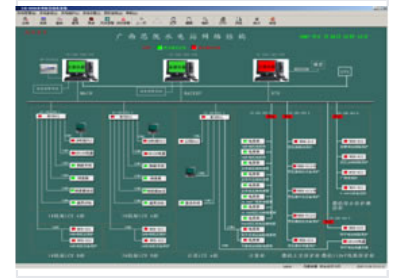


Coal-Fired Power Plant Computer Monitoring and Control System

This system provides real-time monitoring and alarm functions for coal-fired power plants. It also allows for remote operation, online settings adjustments, and database management.



System Overview

Integrated Automation Solution

This advanced monitoring and control system is designed for high-reliability electrical automation in power plants. It integrates protection, measurement, control, communication, and management functions into a unified platform. Engineered for small to medium-sized thermal and coal-fired power plants, it supports comprehensive plant-wide electrical automation and network control system (NCS) integration.

Industry Applications

Coal-Fired Power, Biomass Energy, Cement Waste Heat Recovery, Metallurgy, Chemical Industry, Building Materials

Technical Capabilities

Core Functional Modules

- Electrical Integrated Automation
- Network Control System (NCS)
- Power Plant Automation System (PECS)
- Relay Protection
- Real-time Measurement and Control
- Data Logging and Analysis

Key System Features

High Reliability • High Performance • Field Bus Technology • Network Communication • Scalable Architecture

Monitoring Interface

Monitoring Parameters

Component	Function
220KV System	Main Transformer, Switch, PT/CT Monitoring
Protection Systems	Differential, Overcurrent, and Backup Protection
Plant Transformers	High/Low Factory Transformer Monitoring
System Status	Real-time System Time and Operator Status