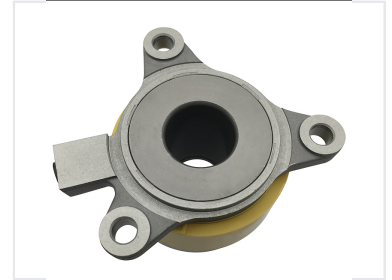


Clutch Release Bearing and Slave Cylinder Assembly

This clutch release bearing and slave cylinder assembly is designed for Japanese automobiles. It facilitates smooth and efficient clutch operation by transmitting the force from the clutch master cylinder to the clutch fork, enabling disengagement of the engine from the transmission.



ADDITIONAL IMAGES



Product Overview

High-Performance Clutch Assembly

This clutch release bearing and slave cylinder assembly is engineered for Japanese automobiles, facilitating smooth and efficient clutch operation. By effectively transmitting force from the clutch master cylinder to the fork, it ensures reliable disengagement of the engine from the transmission. Built with robust materials to withstand high loads and temperatures, this component is designed to meet or exceed OEM specifications for a direct, high-quality replacement.

Technical Details

Key Features

- Robust bearing for reduced friction
- Precision-engineered hydraulic cylinder
- High-load and high-temperature resistance
- Direct replacement design

Compatibility

Japanese Vehicles, Toyota

Commercial Terms

Warranty

1 Year Warranty

Packaging Options

Box Type	Availability
Neutral Brown Box	Available
Custom Color Box	On Request

Stock Status

In stock and ready for fast delivery