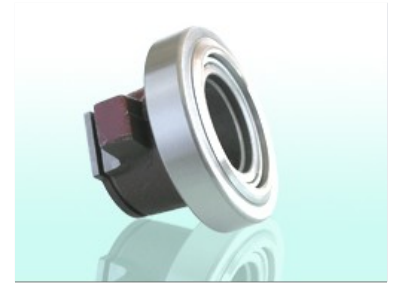


Clutch Release Bearing

This clutch release bearing is designed for automotive clutch systems. It transmits force from the clutch fork to the pressure plate, facilitating smooth and reliable clutch engagement and disengagement.



Product Overview

High-Performance Clutch Release Bearing

This clutch release bearing is specifically engineered for automotive clutch systems, serving as a critical component that facilitates smooth and reliable engagement and disengagement. By efficiently transmitting force from the clutch fork to the pressure plate, it ensures optimal vehicle performance and consistent operation. Constructed from high-quality steel, this bearing is built for durability, capable of withstanding high axial loads and demanding rotational speeds while minimizing wear on surrounding clutch components.

Technical Specifications

Material	High-quality steel
Key Capabilities	High Axial Load Resistance, High Rotational Speed Compatibility, Wear Reduction, Smooth Engagement
Application	Automotive clutch systems
Core Function	Transmits force from clutch fork to pressure plate