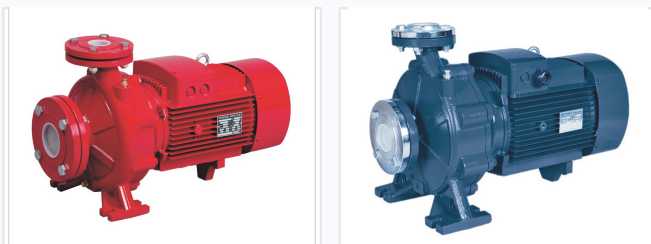


# Close-Coupled Centrifugal Pump

This close-coupled centrifugal pump is designed for efficient fluid transfer. It is suitable for use with clean water and liquids that are not chemically aggressive towards the pump's materials.



## ADDITIONAL IMAGES



## Product Overview

### High-Efficiency Centrifugal Pumping

This EN733 standard centrifugal pump is engineered for superior performance in fluid transfer and pressure boosting applications. Featuring a high-efficiency motor with IP55 protection and a robust anti-corrosive pump casing, it provides reliable operation in demanding environments. Available with multiple material options for impellers and shafts, this pump is designed for long-term durability and continuous duty, making it an ideal choice for industrial, agricultural, and firefighting systems.

## Technical Specifications

EN Standard	EN733
Motor Type	Square Motor, Round Motor
Motor Efficiency	YE3 High Efficient
IP Protection Class	IP55
Insulation Class	F
Duty Cycle	S1 Continuous

## Materials

Impeller Material	Stainless Steel AISI 304, Cast Iron
Shaft Material	Stainless Steel AISI 304, Galvanized Iron
Casing Coating	Anti-corrosive

## Operating Limits

### Operational Thresholds

**-10 °C**

Min Liquid Temp

**120 °C**

Max Liquid Temp

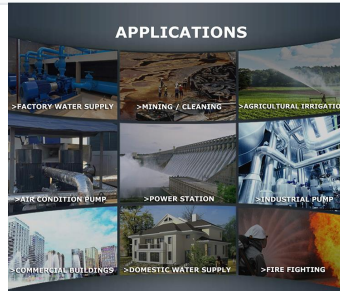
**50 °C**

Max Ambient Temp

**16 bar**

Max Working Pressure

## Applications



Versatile applications including firefighting, industrial, and agricultural irrigation.

### Suitable Applications

- Water supply
- Pressure boosting
- Firefighting sets
- Agricultural irrigation
- Industrial processes
- Water circulation
- Climatisation systems