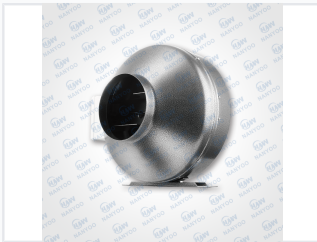


## Circular Duct Ventilation Fan

This circular duct fan is constructed from painted sheet metal. It is designed for efficient air movement in ventilation systems with a cylindrical housing for ductwork integration.



### ADDITIONAL IMAGES



### Overview

#### High-Efficiency Ventilation Solution

This circular duct fan is engineered for high-performance air movement in demanding environments. Constructed from durable painted sheet metal and galvanized components, it offers exceptional corrosion resistance and longevity. Its design focuses on high static pressure and large air volume, making it an ideal choice for long-distance air supply in residential, commercial, and industrial ventilation systems.

### Key Features

#### Core Benefits

- High static pressure for efficient ducting
- High air volume capacity
- Long-distance air supply capability
- Backward impeller design for optimized airflow
- Easy installation with spigot connections

## Technical Performance



The high-efficiency motor and backward impeller design ensure powerful suction and long-distance air supply.

### Performance Highlights

**High**

Static Pressure

**Large**

Air Volume

**Long**

Air Supply Distance

## Construction & Design

Housing Material	Painted sheet metal and galvanized steel
Impeller Design	Backward impeller
Connection Type	Spigot connection for ductwork
Durability Features	Corrosion Resistant, Robust Construction, Galvanized, Painted Finish

## Applications

### Suitable Environments

Residential • Commercial • Industrial