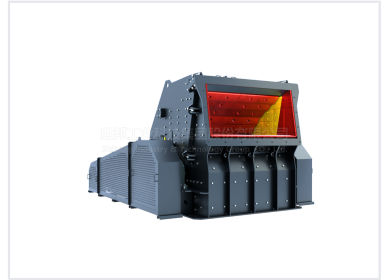


# CI5X Impact Crusher for Mining and Quarrying

The CI5X series impact crusher is a robust and efficient crushing machine designed for secondary and tertiary crushing applications. It features a heavy-duty rotor, wear-resistant blow bars, and a hydraulic adjustment system for quick setting changes.



## ADDITIONAL IMAGES



## Overview

### High-Efficiency Impact Crushing

The CI5X Impact Crusher is a next-generation machine engineered to maximize profitability through high efficiency and energy savings. Designed to replace conventional crushing equipment, it features a heavy-duty rotor with high inertia and a precision-engineered crushing chamber. This system ensures consistent, high-quality cubic output, making it an ideal choice for demanding mining, quarrying, and recycling applications.

## Performance Metrics

### Maximum Input Size

**1300 mm**

Max Input Size

### Throughput Capacity

**250 TPH**

Min Capacity

**2000 TPH**

Max Capacity

## Operational Features

### Key Technologies

- Heavy-duty rotor with strong rotary inertia
- Multifunctional hydraulic operational system
- Involute crushing chamber design
- High-precision rotor bearings

### Compatible Materials

Limestone, Feldspar, Calcite, Talc, Barite, Dolomite, Kaolin, Gypsum, Graphite

## Maintenance & Control

### Maintenance Advantages

Easy hammer replacement • Quick impact block maintenance • Adjustable discharging granularity • Reduced labor costs • Time-efficient adjustments