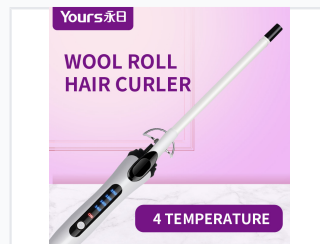


# Ceramic Coated Curling Tong with LED Display

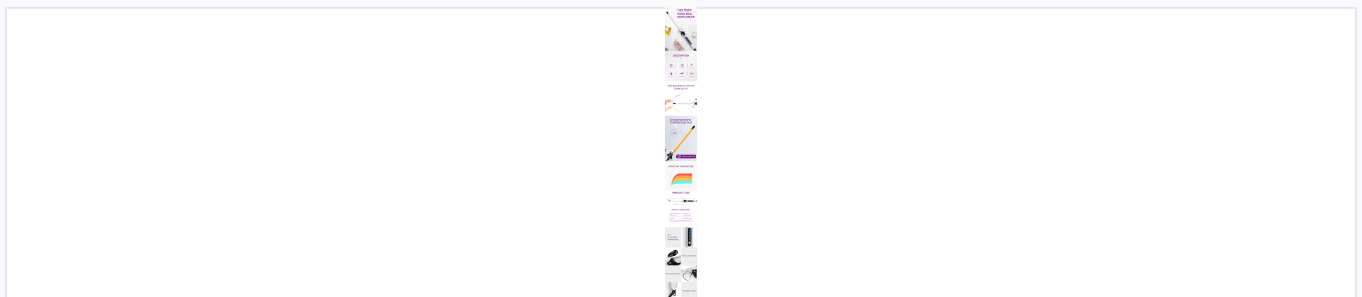
This curling tong features a ceramic coating for even heat distribution and reduced hair damage. It has an LED display to precisely control the temperature from 140 to 200 .



## ADDITIONAL IMAGES



## Product Overview



### Professional Styling Tool

This professional-grade curling tong is designed for creating precise wool roll hairstyles with ease. Featuring a ceramic-coated barrel and a rapid 10-second heat-up time, it offers efficient performance for both salon and home environments. With four adjustable temperature settings and an integrated LED display, users can achieve optimal styling results while maintaining heat control.

## Technical Specifications

Power Rating	32 W
Voltage	220V-240V
Frequency	50 Hz
Item Number	306

## Performance & Features

### Temperature Range

- 140
- 160
- 180
- 200

### Rapid Heat-up

**10 seconds**

Rapid Heat-up Time

## Design & Safety

### Ergonomics

360° Swivel Cord • Hanging Loop • Ceramic Coating

### Safety Features

Anti-scalding Tip, Anti-scalding Rack, Cool Tip, Non-slip Button

## Physical Dimensions

### Device Dimensions

Component	Measurement
Total Length	37cm
Heating Barrel	18cm
Tip Diameter	0.9cm