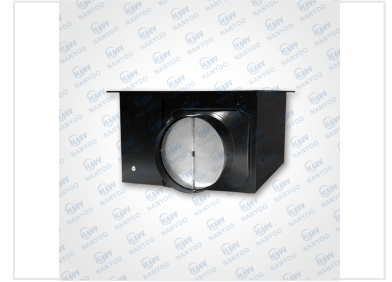
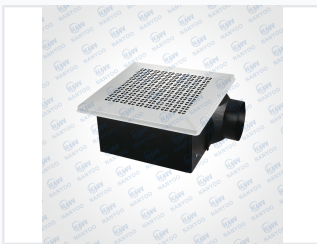


Ceiling Mounted Exhaust Fan with Metal Cover

This ceiling mounted exhaust fan features a metal cover. It is designed for long life and low noise operation.



ADDITIONAL IMAGES



Product Overview

High-Performance Metal Exhaust Fan

This ceiling-mounted exhaust fan is engineered for durability and safety, featuring a full metal casing and housing for superior fire resistance. Its super-slim design allows for industry-leading integration into various ceiling types, making it an ideal choice for bathrooms and kitchens. Designed for powerful air extraction with low noise levels, it ensures a long-lasting and efficient ventilation solution for residential or commercial spaces.

Key Features

Core Features

- Full metal casing for high performance fire resistance
- Super slim casing for industry-leading integration
- Powerful air volume design
- High efficiency motor
- Quiet wind wheel design
- Durable construction for long life

Performance Highlights

Performance Metrics

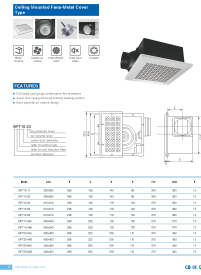
Low

Noise Level

High

Fire Resistance

Technical Specifications



Detailed features and dimensional specifications for the BPT series metal exhaust fans.

Model Dimensions & Sizing

Model	Panel Size (AxA) mm	Installation Size (GxG) mm	Duct Diameter (D) mm
BPT10-11	280x280	240	88
BPT10-23	280x280	240	88
BPT12-24	310x310	270	134
BPT12-34	310x310	270	134
BPT12-35	310x310	270	134
BPT15-44A	340x340	310	128
BPT20-54A	400x400	370	151
BPT20-64A	400x400	370	151

Design & Build

Casing Material	Full Metal
Mounting Type	Ceiling Mounted
Cover Type	Metal Cover

Compliance & Certifications

Certifications
CE • CB