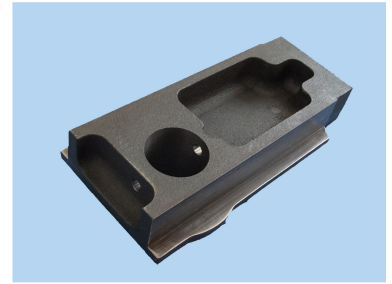
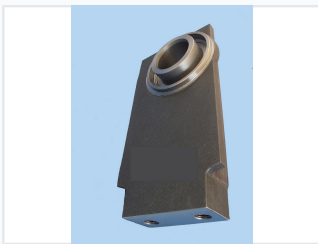


# Cast Iron Undercarriage Mounting Bracket

This cast iron undercarriage mounting bracket provides essential support for construction machinery. Its durable construction and strategic mounting holes ensure secure attachment and long-lasting performance.



## ADDITIONAL IMAGES



## Product Overview

### Heavy-Duty Undercarriage Support

This cast iron undercarriage bracket is engineered for robust support and stability in demanding construction machinery applications. Featuring a reinforced base and precision-machined surfaces, it ensures optimal load-bearing capacity and accurate fitment. The component is designed for reliable performance in harsh environments, offering exceptional resistance to wear and tear.

## Technical Specifications

Material Grade	600-3
Material	Cast Iron

## Design Features

### Key Features

- Cylindrical housing for secure component mounting
- Reinforced base for enhanced load-bearing
- Precision-machined surfaces
- Strategic mounting hole placement

Mounting Points	Large bore, Threaded hole, Multiple mounting points
-----------------	---