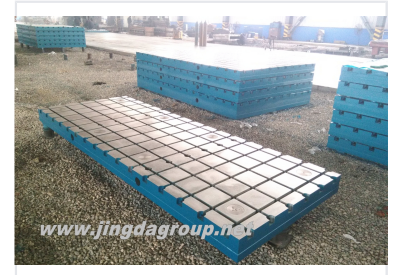
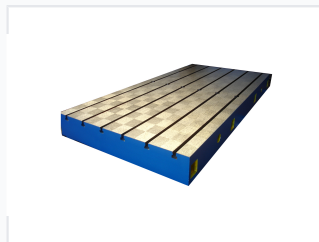
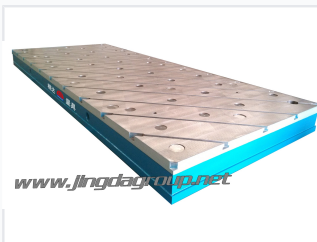


# Cast Iron T-Slotted Floor Plate

This cast iron T-slotted floor plate is applicable to various inspections and benchmark planes for accuracy measurement. It is made from HT200~250 material.



## ADDITIONAL IMAGES



## Product Overview

### Cast Iron T-Slotted Floor Plate

This precision-engineered T-slotted floor plate provides a stable, reliable foundation for accuracy measurement, workpiece setup, and alignment in machining and fabrication environments. Constructed from high-quality cast iron, it is designed to minimize vibration and support heavy-duty industrial applications. Each plate is fully customizable to meet specific customer requirements, including adherence to international standards like DIN876 for flatness accuracy.

## Technical Specifications

Material Composition	HT200~250 Cast Iron
Primary Applications	Accuracy Measurement, Benchmark Planes, Machining Setup, Fabrication, Inspection
Customization Options	Yes
Compliance Standards	DIN876 (for flatness accuracy)

## Accessories

### Compatible Accessories

- T-bolt
- Leveling bolt
- Leveling pad irons

## Precision Data

### Precision Grade by Type (mm)

Type (mm)	Grade 1	Grade 2	Grade 3	Final Machining
1200x1000	20	39	96	0
1500x1000	24	48	120	0
1500x1500	25	50	125	0
2000x1000	26	52	129	0
2000x1500	0	56	140	0
2000x2000	0	60	152	230
2500x1500	0	64	152	0