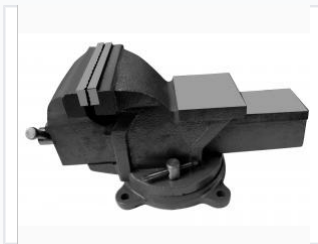


Cast Iron Bench Vise with Machined Jaws

This bench vise is designed for secure clamping and holding of workpieces. It is constructed from robust cast iron for durability and stability.



ADDITIONAL IMAGES



Product Overview

Heavy-Duty Clamping Solution

This bench vise is engineered for professional-grade stability and secure workpiece fixation. Constructed from robust cast iron, it offers the durability required for intensive metalworking, woodworking, and assembly tasks. The precision-machined jaws ensure a reliable grip and smooth operation, providing a stable platform for your most demanding projects.

Technical Specifications

Material	Cast Iron
Model Number	GL-2201
Jaw Type	Precision-machined

Applications

Suitable Applications	Metalworking, Woodworking, Assembly Tasks
-----------------------	---