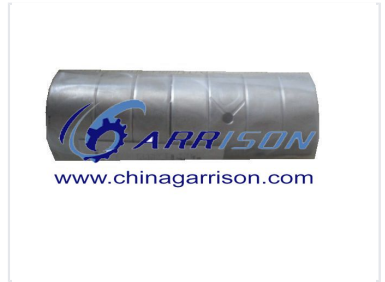


Camshaft Bearing Bushing for Auto Engines

This cylindrical bushing is made for use in automotive camshaft assemblies. It provides a bearing surface, which reduces friction and wear during engine operation.



Product Overview

Precision Engine Component

This camshaft bearing bushing is engineered specifically for automotive engine applications. Designed to provide a critical bearing surface for the camshaft, it effectively reduces friction and minimizes wear during engine operation. Its robust construction ensures reliable performance and durability within the camshaft assembly.

Technical Specifications

Component Type	Camshaft Bearing Bushing
Application	Automotive Engine / Camshaft Assembly

Design Features

Surface Characteristics	Machined Surface, Circumferential Grooves
Form Factor	Cylindrical