

Camera Lens Assembly with Iris

This camera lens assembly features an adjustable iris for precise light control. It includes a flexible circuit board and lens actuator for integration into camera systems.



Product Overview

Precision Surveillance Lens Assembly

The VIRIS23 is a specialized camera lens assembly engineered for high-performance surveillance applications. It features an integrated adjustable iris mechanism and a flexible printed circuit board (FPCB) for precise connectivity and control. This assembly is designed to optimize image quality and focus, making it a critical component for professional camera systems requiring reliable optical adjustment.

Electrical Specifications

Iris Voltage Metrics

3.3 V

Start Voltage

0.5 V

Close Voltage

0.35 V

Ripple Voltage Max

Iris Resistance

190 Ω

Drive Resistance

465 Ω

Deboost Resistance

Optical Specifications

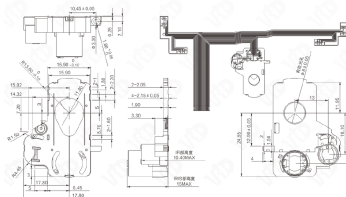
Aperture & Filter

- Max Effective Aperture: f8.0mm
- Neutral Density Filter Value: 1
- Glass Thickness: 0.145mm

Mechanical Dimensions

零件 PART NAME	零件描述 PART DESCRIPTION	零件图号 PART NUMBER	零件图号 PART NUMBER	零件图号 PART NUMBER	零件图号 PART NUMBER	零件图号 PART NUMBER
VIRIS23	IRIS	100-100-100-100	100-100-100-100	100-100-100-100	100-100-100-100	100-100-100-100

规格参考 Specification



Technical drawing and specification reference for the VIRIS23 lens assembly, detailing iris voltage, resistance, and key mechanical dimensions.

Key Dimensions Reference

Parameter	Value
IR Section Height	10.40mm MAX
IRIS Section Height	16mm MAX
Effective Light Hole	1.8±0.05mm
Linear Dimension	10.45±0.05mm