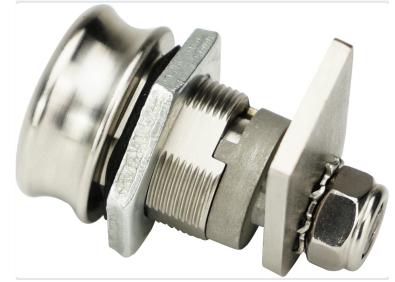


## Cam Lock for Tool Boxes

This cam lock is designed for tool boxes and other security applications. It features a durable metal construction with a smooth, reliable locking mechanism for securing drawers, cabinets, and enclosures.



### ADDITIONAL IMAGES

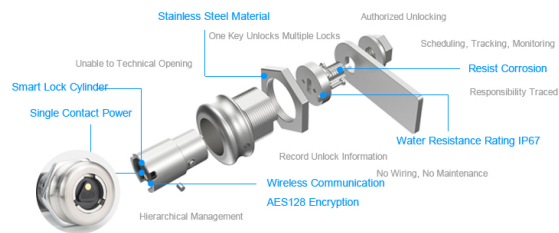


### Product Overview

#### Smart Key-Centric Access Control

This advanced cam lock system transforms traditional tool box security into a managed access control solution using smart keys and electronic cylinders. The system eliminates the need for multiple physical keys by allowing one programmable smart key to open various locks, while providing full audit trails of every unlock event. Designed for high-security environments, it requires no wiring or internal power source, making it a maintenance-free choice for industrial and professional storage.

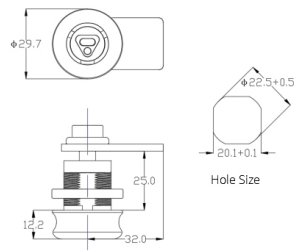
### Core Features



#### Key Features

- One key unlocks multiple locks
- No wiring or external power required (passive lock)
- AES128 encrypted wireless communication
- Programmable access permissions
- Full audit trail and tracking capabilities
- Maintenance-free design

## Technical Specifications



### Physical Dimensions

**29.7 mm**

Face Diameter

**25 mm**

Cylinder Length

**32 mm**

Base Diameter

### Installation Hole Size

20.1mm x 22.5mm

### Protection Ratings

IP67 (Lock), IP65 (Key), IK10 (Impact), Anti-Corrosion

## Electronic Key Performance



### Biometric Performance

Metric	Value
Fingerprint Capacity	100 Groups
False Acceptance Rate	0.001%
False Rejection Rate	<1%
Verification Speed	<0.02s
ESD Protection	>15KV

### Battery & Power

**600 mAh**

Battery Capacity

**1000 times**

Unlocks per Charge

**2 hours**

Charging Time

## Management System



### System Workflow

- Install management software
- Register keys and locks in the system
- Assign specific unlock permissions to users
- Perform work and upload unlock data
- Generate and view audit reports

### Event Storage

60000 logs

## Construction

### Material

Stainless Steel • Durable Metal Alloy