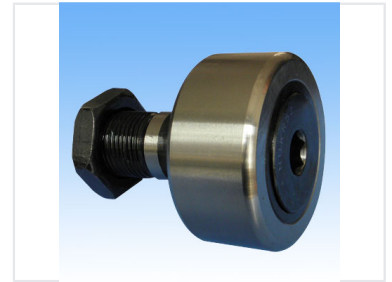


# Cam Follower Bearing

Cam follower bearings are designed to follow cams or tracks in mechanical systems. These bearings support radial and thrust loads, with outer rings made of hardened steel.



## ADDITIONAL IMAGES



## Product Overview

### High-Performance Cam Follower Bearings

These cam follower bearings feature a quenched, thick-walled outer ring with a cambered surface designed to minimize stress concentration. Engineered for reliability, they support high radial loads and are available in various configurations, including options with single, double, or no packing rings. The inclusion of specialized packing materials ensures long-term lubrication, extending maintenance intervals for demanding industrial applications.

## Technical Specifications

### Design Features

Cambered Outer Surface • Thick-Walled Outer Ring • Quenched Steel • Sealed Options Available

Operating Temperature	-30°C to +100°C, -30°C to +180°C
Packing Ring Material	N220, Polytetrafluoroethylene

## Available Models

### Series and Model Numbers

- PWKR Series (35-2RS to 90-2RS)
- CR Series (8V to 36V)
- CRH Series (8-1V to 64V)
- NATR Series (5 to 50)
- NARV Series (5 to 50)