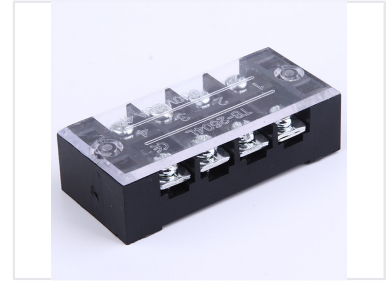
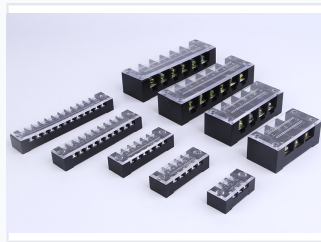


# C-Type Electrical Terminal Block

C-type terminal blocks are used for connecting and distributing electrical wires. They feature a transparent cover, allowing easy visual inspection of connections.



## ADDITIONAL IMAGES



## Product Overview

### Reliable C-Type Terminal Blocks

These C-type electrical terminal blocks are engineered for secure wire connection and distribution in various electrical systems. Featuring a modular design with clear polycarbonate protective covers, they allow for easy visual inspection while ensuring safety and insulation. Available in multiple configurations, these blocks support robust electrical performance for industrial and commercial applications.

## Technical Specifications

### Voltage Rating

**630 V**

Max Voltage

**600 V**

Standard Voltage

### Current Rating

**45 A**

High Capacity

**25 A**

Standard Capacity

### Certifications

CE

## Model Variants

### Available Models

Model Number	Voltage	Current
TBC-4504	630V	45A
LB-5201T	600V	25A
TB-2504L	600V	25A

## Design Features

### Key Features

- Clear polycarbonate protective cover
- Screw-type terminal connections
- Modular design for wiring flexibility
- Visual inspection capability