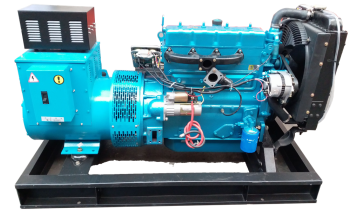
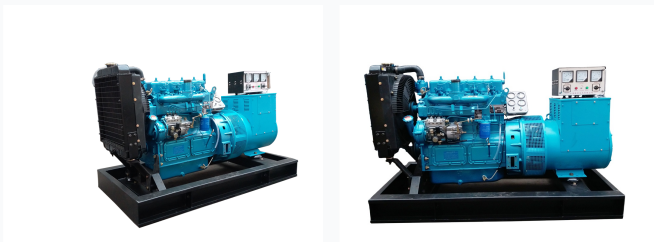


# Brushless Diesel Generator Set

This diesel generator set features a brand new brushless alternator. It has a single bearing, IP21/22 protection, and H insulation class.



## ADDITIONAL IMAGES



## Overview



### PACKING



Secure, moisture-controlled packaging ensures equipment arrives in optimal condition.



### PROJECT



Versatile power solutions suitable for telecommunications, construction, and residential infrastructure.

### Reliable Diesel Power Generation

This brushless diesel generator set is engineered for dependable power supply across various industrial and commercial applications. Featuring a robust engine and a high-efficiency brushless alternator, the unit is mounted on a heavy-duty steel base frame with integrated vibration dampening to ensure stable operation. Each unit comes equipped with comprehensive filtration systems and an 8-hour base fuel tank, providing a ready-to-use solution for critical power needs.

## Technical Specifications

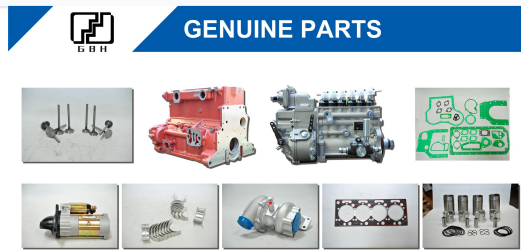
### Generator Model Specifications

Model	Standby Power (KVA)	Rated Current (A)	Engine Model	Output (kW)	Dimensions (mm)
HRC-20CF	27.5	36	ZH4100D	33	1800*840*1250
HRC-24CF	33	43.2	ZH4100D	33	1800*840*1250
HRC-30CF	41.25	54	ZH4100ZD	45	1800*840*1280
HRC-40CF	55	72	R4105ID	50.6	1850*750*1350
HRC-50CF	68.75	90	R4105ZD	61.6	1850*750*1350

### Electrical Standards

Brushless, Single Bearing, IP21/22, H Insulation Class

## Components & Accessories



High-quality genuine components including filters, pistons, and gaskets ensure long-term reliability and performance.

### Standard Equipment

- Heavy duty steel base frame
- Vibration damper system
- Industrial silencer with flexible bellow and elbow
- Air, oil, and fuel filtration system
- Electric start system
- 24V charger
- 12/24V storage batteries
- Standard tool kits and manuals

### Available Options

Automatic Transfer Switch • ABB/Schneider Breaker • Water Heater • Lub-oil Heater • Fuel Level Sensor • Water-Fuel Separator • External Daily Fuel Tank

### Compatible Controllers

Deepsea, DEIF, ComAP, Woodward

## Performance Metrics

### Fuel Tank Autonomy

**8 hours**

Run Time

### Radiator Cooling Capacity

**40 °C**

Open Type

**50 °C**

Soundproof Type