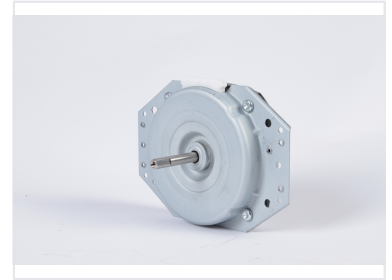
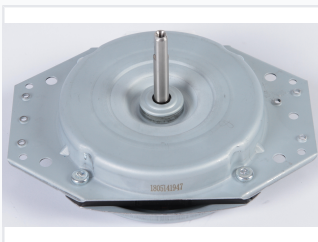


Brushless DC Motor for Washing Machines

This brushless DC motor is designed for use in washing machines. Its robust construction includes a metal housing and a vertically oriented shaft, ensuring efficient and reliable operation.



ADDITIONAL IMAGES



Product Overview

High-Efficiency BLDC Motor

This brushless DC (BLDC) motor is precision-engineered specifically for washing machine applications, prioritizing both energy efficiency and operational durability. Its compact design ensures quiet performance while allowing for precise speed control during both washing and spinning cycles. Built with a robust metal housing and a durable steel shaft, it is designed for seamless integration and long-term reliability in demanding laundry environments.

Technical Specifications

Motor Type	Brushless DC (BLDC)
Housing Material	Robust Metal
Shaft Material	Steel
Shaft Features	Threaded end, Vertically oriented

Key Features

Performance Highlights

1 High Energy Efficiency	1 Low/Quiet Noise Level
------------------------------------	-----------------------------------

Installation Compatibility

- Integrated mounting plate
- Multiple mounting holes
- Clearly marked connection points

Operational Standards

Energy Efficient • Durable Construction